

The **Economic Impact** of the **UK Engineering** **Design Consultancy Sector**



£39.2bn

contribution to UK GDP

1.6% of the economy



£8.4bn

business and
employee taxes

Sufficient to fund
the pay of **200,000**
full-time nurses



£73.3bn

total sales revenues

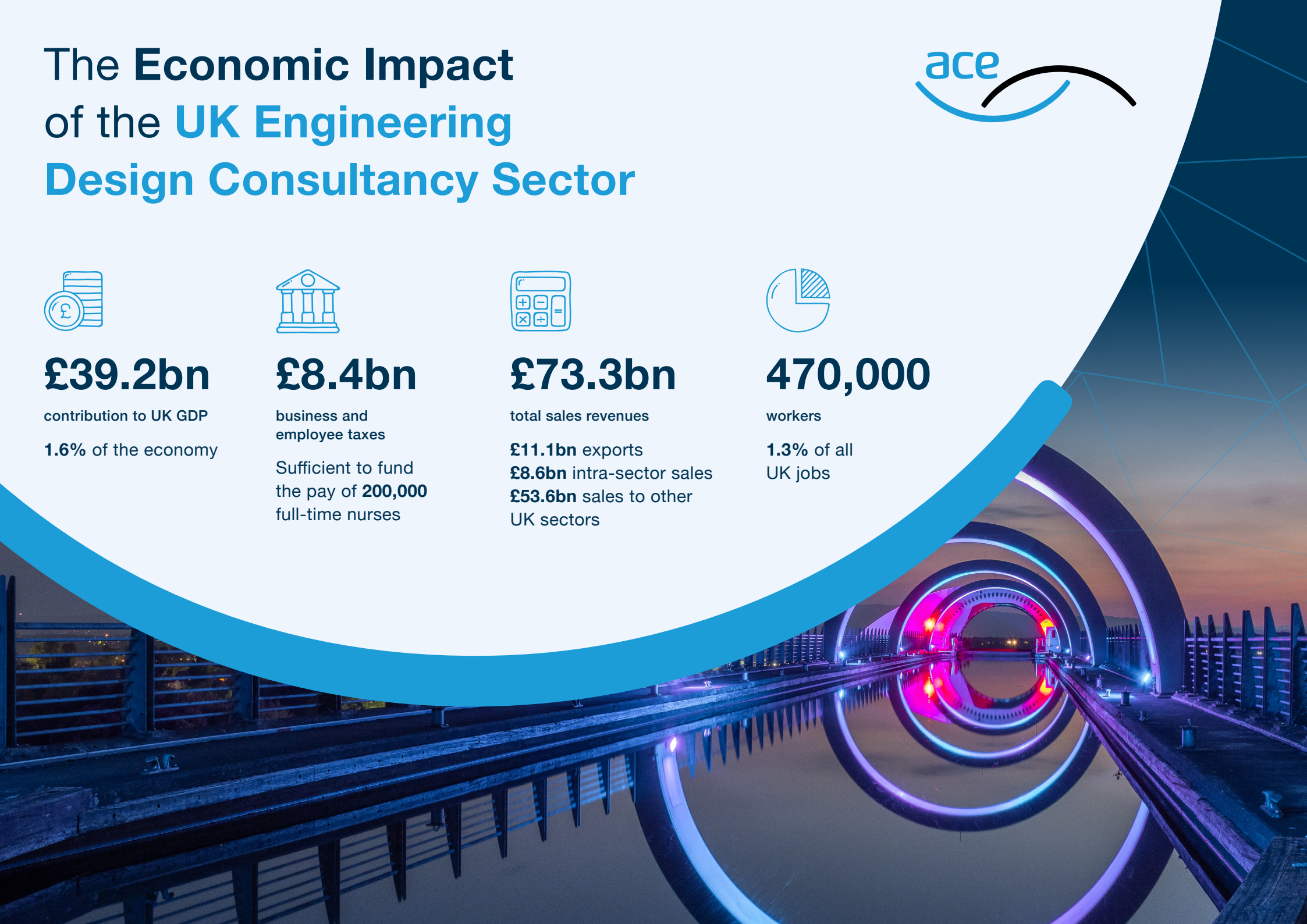
£11.1bn exports
£8.6bn intra-sector sales
£53.6bn sales to other
UK sectors



470,000

workers

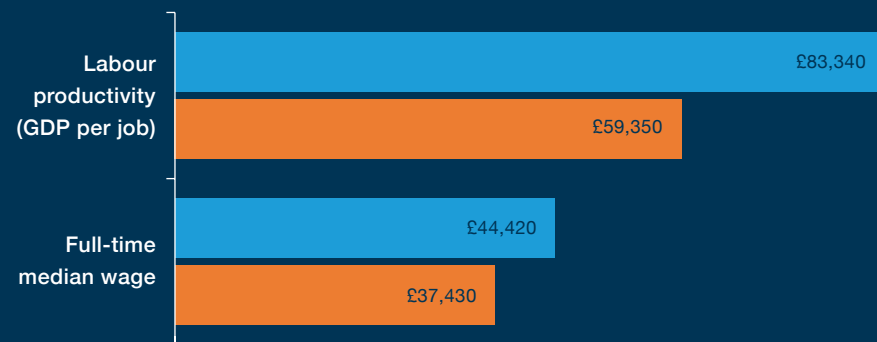
1.3% of all
UK jobs





Labour productivity and wages are well above the national average...

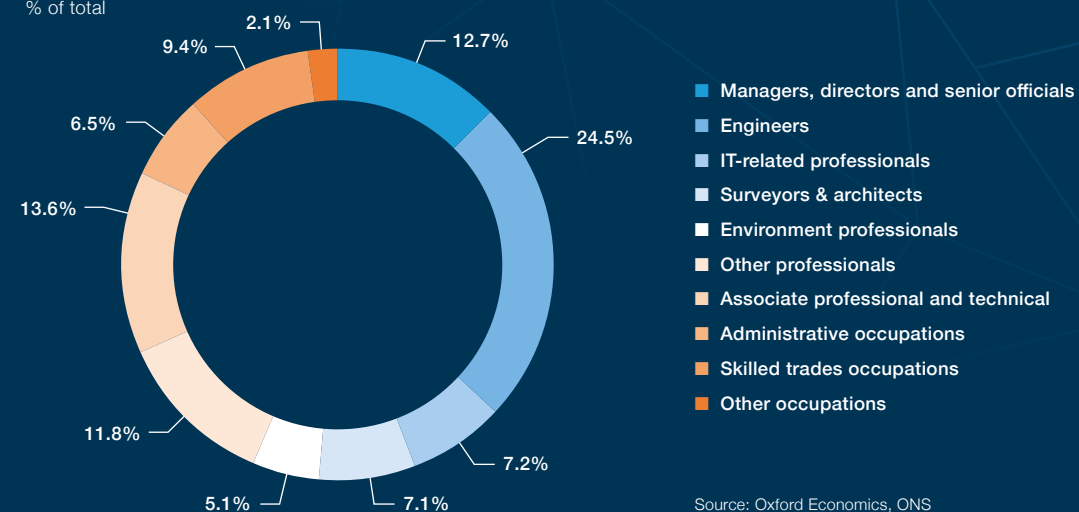
■ Engineering design consultancy sector ■ Whole UK economy



Source: Oxford Economics, ONS

...reflecting the skilled nature of the work involved

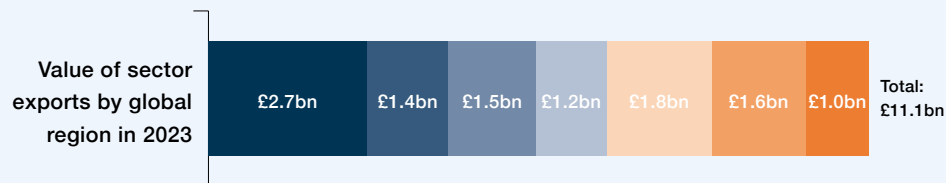
% of total



Source: Oxford Economics, ONS

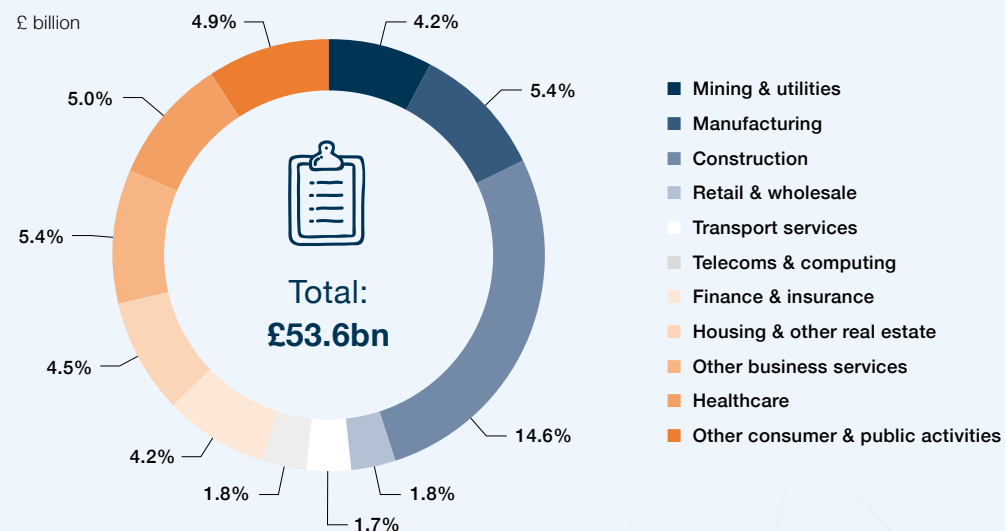
Exports are spread widely around the globe

■ EU-27 ■ Other Europe ■ North America ■ South & C. America
■ Middle East ■ Asia Pacific ■ Africa



Source: Oxford Economics, ONS

The sector's UK customers span a broad spread of sectors, indicating the need for a wide range of skills



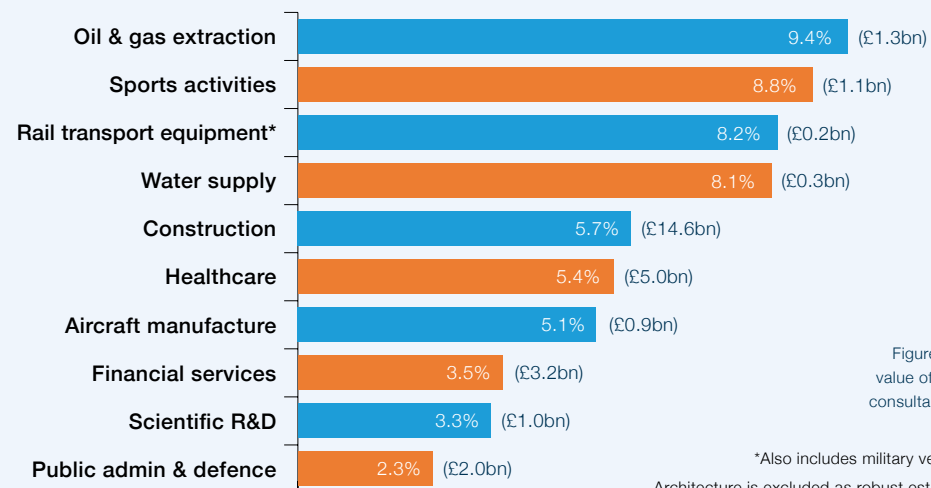
Source: Oxford Economics





The consultants' role is especially valuable for certain key client industries

% of all sector procurement accounted for by UK engineering consultancy



Figures in brackets show the value of UK engineering design consultancy services purchased

*Also includes military vehicles and motorcycles
Architecture is excluded as robust estimates cannot be made

Source: Oxford Economics



Nearly all
work for UK customers
supports
the creation of
capital assets

These include socially-essential buildings, such as hospitals and homes



But most activity
is associated with
investment in
infrastructure,
factories,
and other
business assets...

...which improve the UK economy's long-term growth prospects

For the purposes of this analysis, the sector is defined as class 71.12 in the UK Office for National Statistics' (ONS) Standard Industrial Classification 2007 (SIC 2007), "Engineering activities and related technical consultancy".