


The logo for 'ace' features the lowercase letters 'ace' in a white, sans-serif font. To the right of the text is a white, stylized leaf or wave-like graphic that curves upwards and then downwards. The entire logo is set against a circular blue background.

ace

The background of the entire page is a blue-tinted photograph of a group of people in a meeting. A woman in the center is gesturing with her hands while speaking to others. The image is semi-transparent, allowing the text to be overlaid clearly.

# WORKING FOR YOU IN 2020/21

2018

2019

2020

**2021**

2022

2023

2024



1



# SUPPORTING YOU IN CHALLENGING TIMES

*We were by your side helping you navigate the pandemic*





2



# HELPING YOU TO BUILD BACK BETTER

*We're now working to ensure your voice is heard by government*



Influencing constructively on your behalf – recent member wins on **Construction Playbook** and **Consultancy Playbook**, the **Levelling Up Fund**, the **National Infrastructure Bank**, **NSIP**, and the **Construction Pipeline**.



Clearly articulating the **voice of consultancy to policymakers** – more than 675 media mentions in 2020/21.



Exploring themes central to our future – **procurement, places, transport** and **Net Zero**.



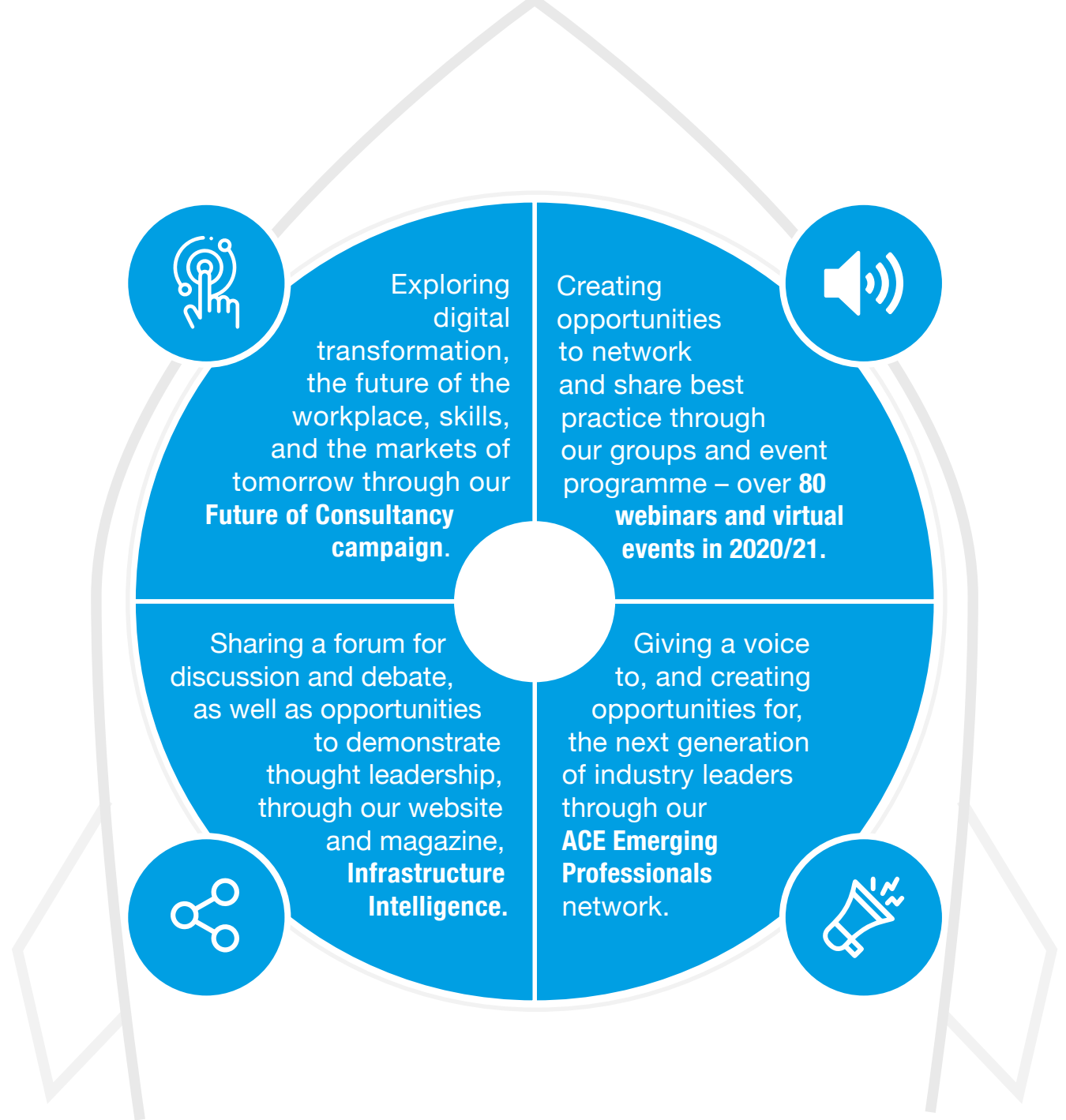
Helping you digest key policy shifts through our **briefings** and **webinars**.

3



# SHAPING OUR INDUSTRY'S FUTURE

*We're keeping you well  
connected and ahead  
of trends*



4



## CREATING OPPORTUNITIES FOR GROWTH

*We're sharing the practical support which helps your business to thrive*



Providing access to leading business experts through our affiliate programme – **PI insurance, legal, R&D tax credits and technology.**

Offering **dedicated services for SMEs** through our regular forum, legal and contract support, and through our recently published SME guide to Net Zero.

Sharing networking opportunities across the UK through our **five regional and national groups** – over 20 meetings and webinars in 2020/21.

Linking members to **new business opportunities** – for example early input for small and large members to the £3.7bn New Hospitals Programme.





**Association for Consultancy and Engineering**

Alliance House, 12 Caxton Street

London, SW1H 0QL

**T: 020 7222 6557**

[membership@acenet.co.uk](mailto:membership@acenet.co.uk)

[www.acenet.co.uk](http://www.acenet.co.uk)

@ACE\_Updates